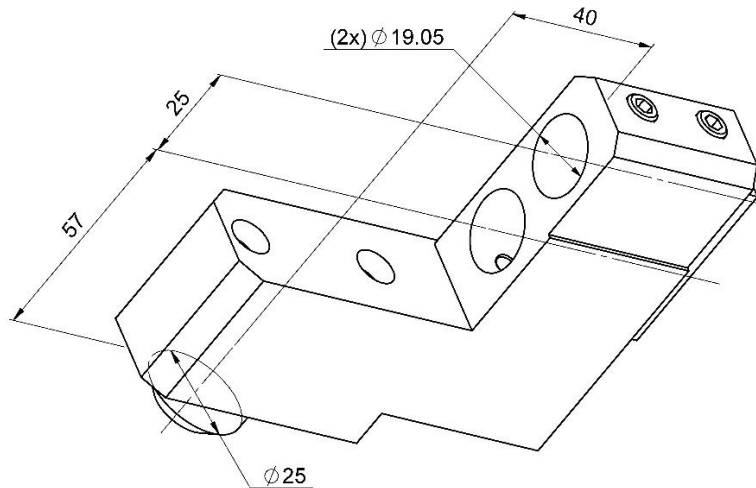
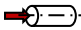
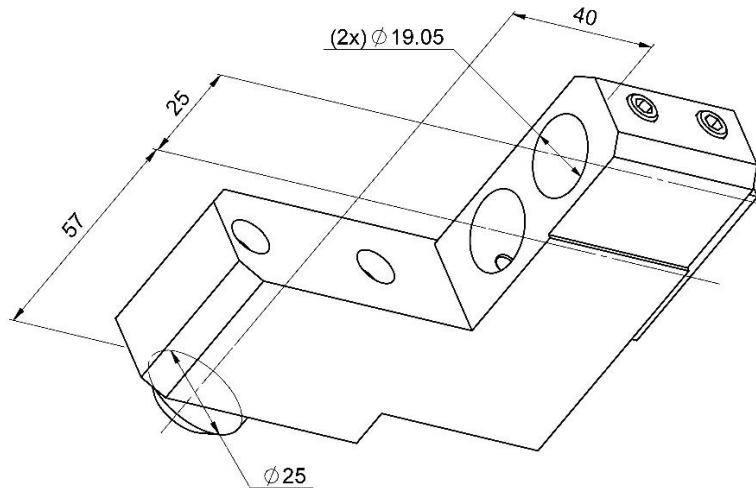
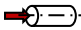
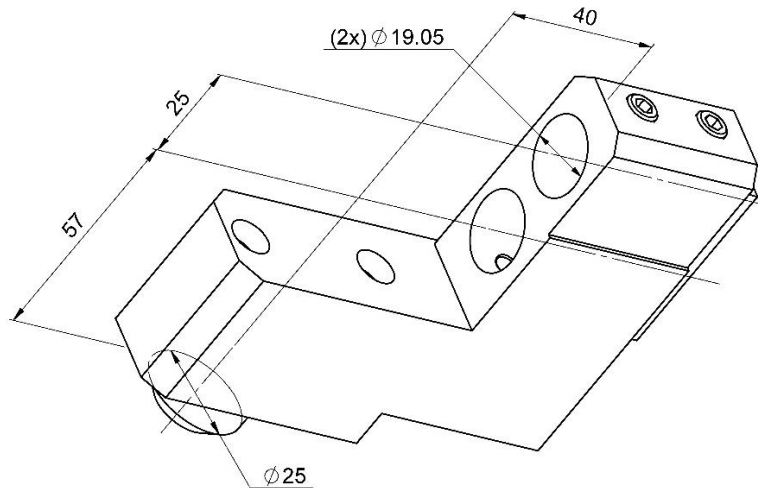


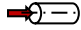
GDF902-19

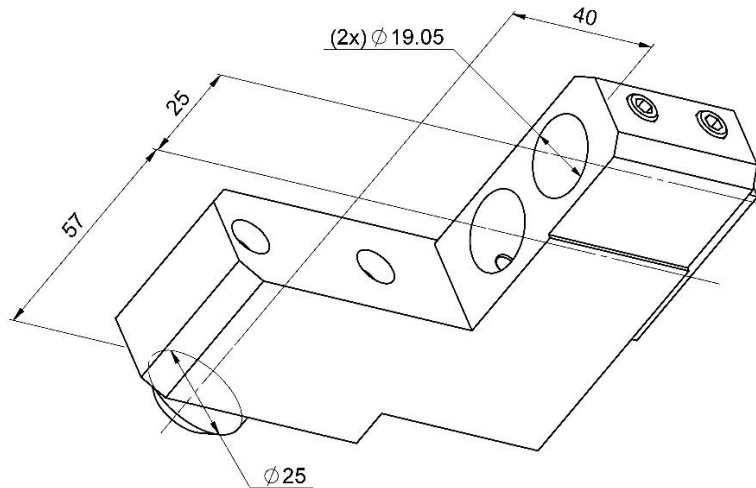
Machine: CITIZEN Cincom
Type: M416-V/VII/VIII
Emplacement, N°: Coulisse linéaire / T06 - T07
Travail sur: Broche de reprise
Type de travail: 
n_{max}: - [rpm]
i (n_i / n_o): - / -
Attachement: 2 X Ø 19.05
Sans refroidissement
Infos:


GDF902-19

Machine: CITIZEN Cincom
Type: M416-V/VII/VIII
Location, N°: Gangtool / T06 - T07
Work on: Back spindle
Type of work: 
n_{max}: - [rpm]
i (n_i / n₀): - / -
Attachement: 2 X Ø 19.05
Without coolant
Infos:

GDF902-19

Maschine: CITIZEN Cincom
Typ: M416-V/VII/VIII
Position, N°: Vertikalhalter / T06 - T07
Arbeit über: Hauptspindel / Abgreifspindel
Arbeitstyp: 
n_{max}: - [rpm]
i (n_i / n_o): - / -
Befestigung: 2 X Ø 19.05
Ohne Kühlmittel
Infos:

GDF902-19

Macchina: CITIZEN Cincom
Tipo: M416-V/VII/VIII
Posizione, N°: Slitta lineare/ T06 - T07
Lavoro al: Mandrino principale / Contromandrino
Tipo di lavoro: 
n_{max}: - [rpm]
i (n_i / n_o): - / -
Ataccamento: 2 X Ø 19.05
Senza refrigerante
Informazioni: